



Want to know more about civic integration in the Drechtsteden region? Then check out our website with all the information:



or watch the video on civil integration as a family migrant:



Extension or exemption

Unable to complete your civic integration on time? Or do you need more time due to problems with your health or other issues? Then you can apply through DUO for an extension or exemption. DUO will then decide on your application. More information can be found on the website:



and



Naturalisation

Naturalising means becoming a Dutch citizen. The IND website explains when you can become a Dutch citizen. It also lists what documents you need. You apply for naturalisation through your municipality.



Sociale Dienst Drechtsteden
Spuiboulevard 298
3311 GR Dordrecht

Postbus 619
3300 AP Dordrecht

078 770 8910
www.socialedienstdrechtsteden.nl



Sociale Dienst
Drechtsteden

Het inburgeringstraject wordt mede mogelijk gemaakt door:



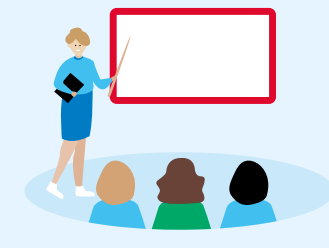
Sociale Dienst
Drechtsteden

This is
how it
works!

Samen werken
aan zelfstandigheid

Civic integration for
family migrants in the
Drechtsteden region!





You will live with your husband, wife or family in one of the Drechtsteden municipalities.

You will be invited to take the Aptitude Test.

You will have a consultation meeting about your learning pathway and receive your personal Civic Integration and Participation Plan (PIP).

You start looking for a language provider.

If you do not have enough income, you can get a loan from DUO to pay for your learning pathway.

You start your learning pathway.

You follow the Labour Market and Participation Module and the Participation Declaration pathway

You take exams.

You have passed your exams or completed 800 hours of language classes.

Congratulations! You have finished your civic integration.

You have recently started living with your husband, wife or family in Alblasserdam, Dordrecht, Hardinxveld-Giessendam, Hendrik-Ido-Ambacht, Papendrecht, Sliedrecht or Zwijndrecht. Civic integration is mandatory. Those required to do so must follow a civic integration programme. You have three years to complete your civic integration. You will learn the Dutch language and participate in Dutch society as soon as possible. You are responsible for your own integration. Drechtsteden Social Services (SDD) provides advice and guidance about your civic integration programme.

For more information on the civic integration requirement, visit the Executive Education Agency (DUO) website.



The broad intake starts with taking the Aptitude Test. You will be invited to take the test and the results will help you choose the best learning pathway. The test is mandatory. You can practise the test at



Welcome to the Drechtsteden region! You live in Alblasserdam, Dordrecht, Hardinxveld-Giessendam, Hendrik-Ido-Ambacht, Papendrecht, Sliedrecht or Zwijndrecht. Drechtsteden Social Services (SDD) works on your civic integration in these municipalities. Here is some important information about your civic integration in the Drechtsteden.

The broad intake finishes with an information meeting about the civic integration and your personal Civic Integration and Participation Plan (PIP). The PIP tells you what you need to do for your civic integration. Your civic integration period starts once you have received your PIP. From that moment, you have 3 years to complete the integration programme. You will receive a letter from DUO (the Executive Education Agency) that states when your civic integration starts and by what date you must complete it.

The SDD recommends getting language lessons from an approved language school. You pay for the language course and exams yourself. An approved language school will have a Blik op Werk quality mark. You can find these schools via the website:



or



You either pay for your course and exam yourself or borrow the funds from DUO. How much money you can borrow from DUO depends on your income. Borrowing money is possible only for approved schools. For more information regarding the costs of civic integration, visit the website:



There are 2 different learning pathways:

- **B1-path**
In the B1 path, you will take your exams at B1 level. The exams include: Reading B1 level, Listening B1 level, Speaking B1 level, Writing B1 level and Knowledge of Dutch Society.
Unable to pass your exams at B1 level? Discuss this with your integration consultant. Together, you will determine if you can take one or more exams at A2 level. This is possible only if you have completed 600 hours of language classes from an approved language school.
- **Self-reliance path (Z-path)**
With the Z-path, you must complete 800 hours of language classes from an approved language school. You do not need to take exams. At the end of the Z-path, you will have a final meeting with your integration consultant.

Your integration consultant will guide you during your civic integration. He or she is your regular contact person. You will have several appointments with your integration consultant throughout the year to discuss how your civic integration is going.

If you are on the B1 or the Z-path, the Labour Market and Participation Module (MAP) and the Participation Declaration pathway (PVT) are mandatory.

The MAP consists of:

- Workshops about the Dutch labour market
- 40 hours of work experience
- A final meeting with your integration consultant.

The Participation Declaration pathway (PVT) consists of:

- A few workshops and a field trip during your civic integration programme.
- Signing the participation declaration. The declaration states that you are aware of and respect the most important Dutch values.

To pass the B1 path, you need to take exams. You take these exams through DUO.

If you are on the Z-path, you do not have to take exams.

If you have passed the civic integration exams, you will receive a diploma.

On the Z-path? Then you do not have to take exams, but must have completed 800 hours of language classes from an approved language school. You will receive a certificate after completing the Z-path.

You will have a final meeting with your integration consultant to finish your learning pathway and civic integration.

You are integrated and participating in Dutch society.